



Caledon
Parent-Child
Centre

Strengthening families
for a brighter tomorrow.

2016 - 2017 Annual Report

Contents

| | |
|----|--|
| 3 | A Message of Thanks <i>Chair & Executive Director Message</i> |
| 4 | Vision, Mission & Values |
| 5 | CPCC Strategic Priorities <i>Overview</i> |
| 6 | 2016-2017 Facts & Figures <i>An Organizational Snapshot</i> |
| 7 | Commitment and Excellence in Action <i>Human Resources</i> |
| 8 | Supporting Caledon's Growing Community of Communities <i>Programming</i> |
| 9 | Step Inside Our Story <i>Impact In Our Community</i> |
| 10 | Enhancing Service Access in our Community Through Collaboration <i>Stakeholders</i> |
| 11 | Our Families Speak <i>Testimonials</i> |
| 12 | Funders and Donors <i>Financial Supporters</i> |
| 14 | Financial Summary |
| 15 | Board of Directors <i>Governance</i> |

Printing Donated by



A Message of Thanks

While the proverb “it takes a village to raise a child” dates back many years, this expertly aligns with the philosophy of the Caledon Parent-Child Centre of today; “strengthening families for a brighter tomorrow”. Reflecting upon the successes of the fourth year of our 2013 - 2018 strategic plan, we are grateful for the “villages” within and outside of our organization that strengthen our Centre so we can continue focusing on supporting the families and children who visit us each day.

2016/2017 was a year of transition for the organization as we accommodated a modified service plan due to a reduction in core operating funding. This transition was handled seamlessly and program results continue to be achieved in the 90th percentile.

Strong performance outcomes are in large part attributed to an outstanding staff. Each day, our highly qualified staff spread knowledge and support in early child development, positive parenting and nurturing care, working to strengthen our families. Staff embrace continuous learning based on research and evidence-based practice that guides quality programming in the early years.

In July 2016, the Ministry of Education released planning guidelines regarding the provincial plan for moving forward with the transformation of Ontario Early Years Child and Family Centres, with a focus on ensuring high quality, seamless and accessible services for children 0 to 6 years and their families. By 2018, Ministry-funded child and family programs will be integrated into a single, cohesive system of Ontario Early Years Child and Family Centres.

We are pleased to actively participate in Peel's integrated planning approach together with the Ministry, the Region of Peel, Success By 6 Peel and other early years partners. We look forward to continued collaboration and engagement with these groups which will ensure development of service system plans that are responsive to local community needs.


As Caledon's population grows in size and diversity, we continue to monitor demand, particularly where families are under-served, to ensure we are reaching out to the villages of Caledon. In response to this demand, we introduced a broader range of programming in rural areas. Where possible, service sites and programs were redistributed to address emerging growth throughout Caledon.

On behalf of the Board of Directors and staff, we gratefully acknowledge our “village” of financial supporters, in particular our major funding partners, who enable our work and invest in improving outcomes for the children, families and communities we serve. We also extend appreciation to community donors for coming together to fill gaps in a year of fiscal constraint. A special thank you to the Rotary Clubs of Palgrave and Bolton for a one year financial commitment of our Special Needs program, and to the Town of Caledon for in-kind and financial grants that supported room rentals for our rural programs.

Our work would not be possible without the dedication and support of our Board and staff, and the many volunteers and community partners that work alongside them. We thank you all for your tireless efforts and countless contributions. You play an integral role in the early learning and family support sector building stronger families and healthier communities.



Heather Baker
Chair, Board of Directors



Teresa Colasanti
Executive Director

Vision

To be a leading member of an integrated system of community services that fosters the healthy development of children and families, resulting in a strong and socially responsive community.

Mission

To provide support, resources and education that strengthen families and promote the optimal development of children.

Values

Collaboration - We believe in the strength of partnerships that increase community capacity and accessibility to local health care and social services.

Inclusion - We operate in the spirit of inclusion and tolerance whereby all individuals feel valued and accepted.

Accountability - We are guided by integrity and fiscal responsibility and strive to be effective and responsive to the needs of our community.

Lifelong Learning - We value education and recognize the power of lifelong learning and empowerment as the foundations of a strong community.

Nurturing Environment - We provide a safe and supportive environment that fosters a sense of trust and mutual respect where individuals feel connected to one another and their community.

Overview

CPCC Strategic Priorities

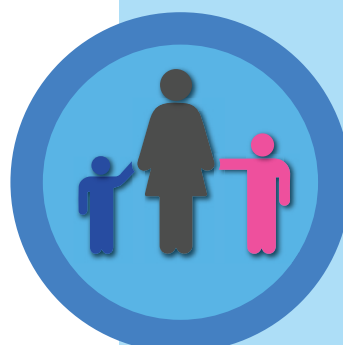


FINANCIAL

CPCC will increase and diversify sustainable funding.

Achievements:

- Increased fund development revenue including government grants by 18%.
- Secured in-kind and financial grants for rural program facility rentals.
- Leveraged major gift revenue to support service delivery funding gaps.



PROGRAMMING

CPCC will evaluate and enhance programming.

Achievements:

- Introduced a broader range of programming in rural communities.
- Enhanced socio-demographic data collection to inform service planning.
- Developed program handouts promoting the Pedagogy of Learning.



ORGANIZATIONAL

CPCC will plan for and build human resource capacity.

Achievements:

- Developed a leadership succession plan that ensures continuity of operations.
- Achieved "Raising the Bar in Peel" certification, a quality initiative that guides programming in the early years.

CPCC will adapt and evolve facilities and operations.

Achievements:

- Upgraded IT infrastructure that improves efficiency and continuity of operations.
- Refreshed Bolton site to revitalize and reflect a natural learning environment.



STAKEHOLDERS

CPCC will increase community profile and connections.

Achievements:

- Implemented initial phases of a multi-year communications strategy to increase community profile.
- Increased communications in rural communities through targeted e-communications and social media, resulting in a 30% increase in communication with families in those communities.

An Organizational Snapshot

2016-2017 Facts & Figures

The Caledon Parent-Child Centre (CPCC) plays an indispensable role in the lives of Caledon families, offering an important blend of free services that strengthen families and assist them in the critical role of raising young children.

Our services support healthy child development, assist with the early identification of developmental concerns, provide referrals to specialized services and community supports, enhance parenting skills, and prepare children for school. We put our mission into action through a continuum of core programs and services designed to achieve specific outcomes as outlined in this report.



**# of Years
Providing
Services**



4,293
**# of Children &
Parents/Caregivers
who accessed services**



66
**# of Early
Learning
Programs**



of Agency Locations



17,104
of Child Visits



21
**# of Parent
Workshops**



393
**# of New
Families Registered**



12,733
**# of Parent/Caregiver
Visits**



322
**# of Referrals to other
Early Years Services**



Family Resource Programs

We are a long-standing member of the Canadian Association of Family Resource Programs. Programs are guided by the principles of family support that focus on building supportive relationships, facilitating growth, respecting diversity and furthering community development.



Ontario Early Years

We are proud to celebrate over 13 years as an Ontario Early Years service provider. Programs incorporate the ELECT, an early learning framework which sets out 6 principles to guide practice in early years settings.

Commitment and Excellence in Action

Staff: Our frontline staff are a committed team of individuals who actively enhance their skills through participation in continuous learning opportunities based on research and evidence-based practice. We are proud to once again share our achievement of the 2016 Adaptation of "Raising the Bar"(RTB) in Peel. This quality initiative engages programs and educators in ongoing reflection and critical thinking to enhance quality in their environments through positive relationships.

It provides a platform to increase a program's capacity to enrich their practices based on the following foundations:

- Lifelong Learning
- Reflective Educators
- Mentorship
- Leadership
- Collaborative Inquiry

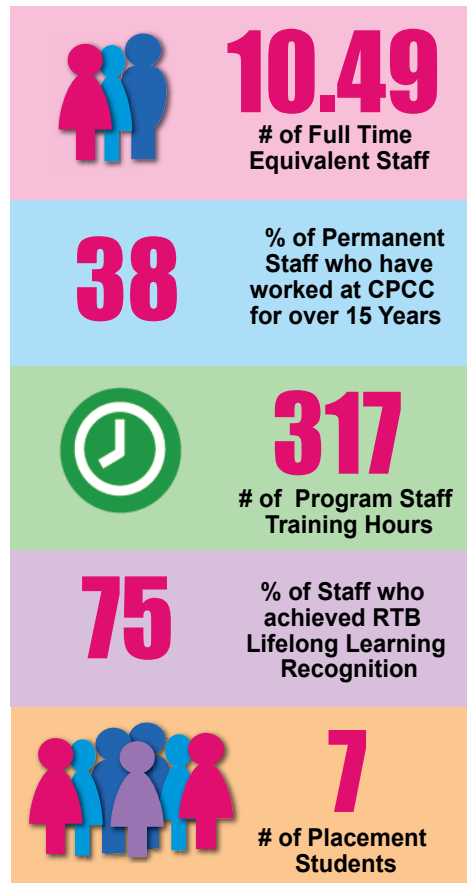
Placement Students:

The CPCC provides unique practicum opportunities for students attending post-secondary education programs to build and practice skills to support early learning, health and well-being of children and their families.

These mentored experiences enhance and enrich the learning of our future educators, social service and child care professionals.

**2016/2017
Length of Service Milestone**
**Debbie Swan
(15 Years)**

**Thank you Debbie, for your
dedication to the CPCC!**



Bhayana Family Foundation Award Recipients

In late spring of 2016, CPCC Program Facilitators Mary Carley, Carol Medhurst and Kelly Rumney were nominated by their peers for the prestigious Bhayana Awards which recognize outstanding contributions of frontline staff at United Way of Peel Region (UWPR) partner agencies.

Carol (3rd from left) was named an award recipient in the category of Innovation & Creativity; Kelly (2nd from left) in the category of Leadership. We congratulate all of our nominees and

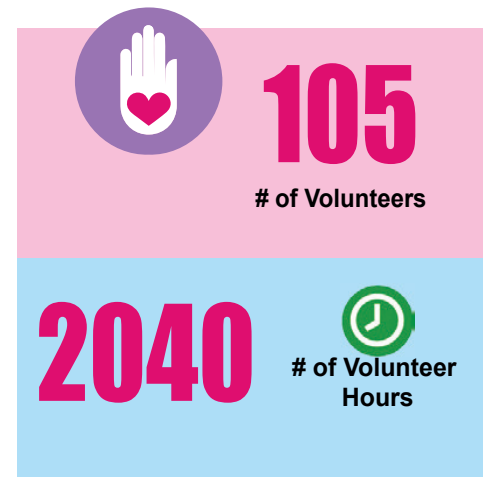
Volunteers:

Our dedicated CPCC volunteer team helps support our staff on the front line. They work behind the scenes providing leadership and support, sit on numerous committees and much more. Our volunteers are one of our most valuable resources, helping us enrich the lives of the families and children we serve. We are proud to celebrate their caring spirit and honour the positive impact of their contributions.



Corporate Engagement Award Recipient

The CPCC is proud to recognize the team at Scotiabank Bolton, recipient of the VMBC "Corporate Engagement Award - Caledon" this spring. Longtime supporters of CPCC's signature fundraiser Laugh Out Loud, Frank Macellaio and his team routinely volunteer and provide ticket matching financial support. We congratulate the Scotiabank Bolton team on this well deserved accolade!



Programming

Supporting Caledon's Growing Community of Communities

A child's family provides the first environment in which they will interact and has the greatest impact on a child's learning, behaviour and health. Our Centre possesses the unique opportunity to engage with parents/caregivers and children during the most influential years of life. At the CPCC, families find support, programs and resources to help them navigate the complex journey that is parenting.

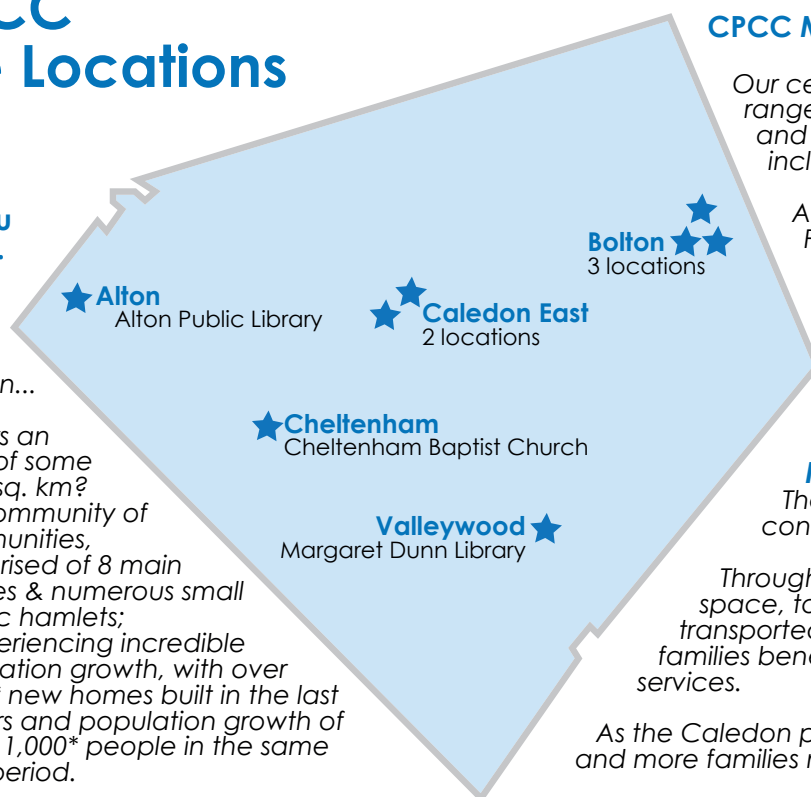
CPCC Site Locations

Did you know...

The Town of Caledon...

- covers an area of some 700* sq. km?
- is a community of communities, comprised of 8 main villages & numerous small historic hamlets;
- is experiencing incredible population growth, with over 5,000* new homes built in the last 7 years and population growth of over 11,000* people in the same time period.

*Sources: Stats Canada; Town of Caledon;



CPCC Main Site - Bolton

Our central location in Bolton provides a diverse range of informal and formal child development and family support programs and services in an inclusive environment.

All CPCC programs are based on the Four Foundations for Learning*: Belonging, Well-Being, Engagement and Expression.

Families can also access support through on-site consultations, peer support groups, information and referrals.

* How Does Learning Happen

Mobile Rural Outreach Program

The CPCC continues to support families and connect communities in Caledon's rural villages.

Through the use of a modified van and rented space, toys, resources, program supplies and staff are transported to neighbourhoods in Caledon where families benefit from connections and can receive services.

As the Caledon population grows, the CPCC supports more and more families new to the communities.

Summer Programming

To take advantage of the glorious Canadian summer weather, the CPCC moves our Family Time Drop In program to the Caledon parks. Each morning we open a mini playground to connect our families to the outdoors and each other.



Step Inside Our Story...

Impact in our community

91.5% of participating parents met new friends in the community and built a supportive network.

92% of participating parents reported an increase in knowledge of child development and positive parenting strategies.

94% of children who participated in early learning programs increased their communication skills.

90.7% of children participating in early learning programs built and improved their social skills such as turn-taking, sharing, following directions and co-operative play.

100 % of "Let's Get Together" parents reported making connections with other families parenting children with special needs.

224 grandparents attended the CPCC with their grandchildren.

270 children benefitted from programs which prepare young children for school.

1837 Family Time Drop In hours provided informal opportunities for parents to connect with each other, early years professionals and other community resources. During drop in, children played and learned in an enriching play environment while engaging with other children and adults.

13 parents and their children were supported at the Growing Together in Peel program, benefitting families experiencing financial challenges.

51 meals were prepared for "Growing Together in Peel" families

171 people accessed support groups

11% increase in attendees at rural village sites over the previous year.

74 parents received respite while attending family support programs and workshops.



Stakeholders

Enhancing Service Access through Collaboration

The Centre works in close collaboration with other local agencies who support children and families, and acts as a bridge between various services. These collaborations encourage the ongoing development of new resources and services for children and families that are responsive and empowering to each community.



A Few Collaborative Initiatives From This Year

Peel Parenting Collective: Our Program Manager continues to sit as a member of the Peel Parenting Collective, and in the past year, the group created and evaluated the PCC website, created the "Have A Conversation" poster with tips for families and endorsed common and consistent messages and resources included in the PPC Digest for families.

The L.I.O.N. (Learning In Our Neighbourhood): In an ongoing effort to find ways to connect with the rapidly growing community of Southfields Village, the CPCC and LION staff continued to offer early learning activities for families with children 0 to 6 years of age during the summer months.

The Exchange Collaborative: The CPCC continues to collaborate with our Exchange partners, notably through a cooking program at the Exchange which focuses on sharing budget wise, nutritious ideas for families. Topics have included "Slow Cooker Meals", "Prep-Ahead Meals" and "Salads Kids Love".

Town of Caledon: The CPCC once again collaborated with the Town of Caledon Parks and Recreation staff to provide summer outdoor activities in the village communities of Caledon.

Community Outreach

We continue to support our Mobile Rural Outreach Program by maintaining a high profile in our community, attending local events and celebrations like Community Days and the Santa Claus Parade. We also meet parents by attending the local schools during their Welcome to Kindergarten/Start With A Smile events, reach out to local physicians and day care facilities in Caledon with information about our programs and resources.

Special Events

Throughout the year, the CPCC hosts a number of special events. These events are very popular with our families and help to raise much needed funds for the Centre.

Laugh Out Loud: This popular annual event - held at The Royal Ambassador - brings in a team of Yuk Yuks On Tour comedians for an exclusive evening of comedy. Proceeds from the event benefit family support programs that strengthen families, including those for families parenting children with special needs.

Family Fun Nights: The CPCC holds 2 Family Fun Nights each year themed to celebrate Halloween and Valentine's Day respectively, both offered activities such as crafts, face painting, playroom activities and stories, as well as snacks and dress up!

Children's Christmas Party: In late November, the CPCC once again hosted our annual Children's Christmas Party. Children's performer, Lenny Graf, provided the music, letters to Santa Claus were written and mailed (and then Santa himself made a special appearance). A light snack, and a children's craft rounded out the morning.



Testimonials

Our Families Speak

If you want to know about the Caledon Parent-Child Centre, the best person to ask is one of our parents or caregivers. Here is a selection of testimonials that speak to what the CPCC means to the families we serve:



"The Centre places great emphasis on being part of the community. This is a lifelong skill which will help us all flourish."

A CPCC Mom

"I don't know where I would be without the kind of support and nonjudgmental acceptance I have found here."

An Adjustments After Birth Parent



"(Our son) was always beaming and full of joy when he attended "School Here I Come" Mini Camp, and his confidence and self-esteem seemed to soar because of the positive reinforcement he received there."

A CPCC Parent

"For us, group (LGT) is a priority for the family; we make every effort to get there every week. There is a very special irony in the knowledge that it takes a group of special needs parents to make it feel that the rest of the world is normal for you."

A Let's Get Together Dad



Financial Supporters

Funders and Donors

The CPCC would like to acknowledge the financial contributions of our funding partners and donors. Your support enables our work and is an investment in the healthy development of Caledon families.

FUNDING PARTNERS

Region of Peel
Ministry of Education
United Way of Peel Region
Health & Welfare Canada

Human Resources and Skills Development Canada
Ministry of Children & Youth Services
Town of Caledon
Fundraising & Donations

FINANCIAL DONORS

Thank you to the following businesses, service clubs, foundations and individuals for their financial contributions for programs and events from April 2016 to March 2017.

CORPORATE GIFTS

Bank of Montreal – Bolton Branch
Bill Parnaby, Royal LePage RCR Realty
Bolton Auto Parts
Egan Funeral Home
Entera Utility Contractors Co. Ltd.
Fines Ford Lincoln Sales & Service Ltd.
Garden Foods Markets
Husky Injection Molding Systems Ltd.
Princess Auto - Bolton

Robert B. Somerville Co. Limited
Scotiabank, Bolton Branch
Silcotech North America Inc.
Total Lubricants Canada

SERVICE CLUBS & FOUNDATIONS

Gary Bluestein Charitable Foundation
The Rotary Club of Palgrave

INDIVIDUAL GIFTS

Alberto's Trattoria and Sports Bar
Elodie Andrews
Andrea Aveiro
Katie Baggio
Heather Baker
Lynn Baker
Tahera Bazmi in celebration of Zain Jawad
Iram Beatson
Nikola Boadway
Dannie Buhajczuk
Krysta Cadden
Sabrina Caradonna
Cheryl Chambers
LeeAnn Chng
Anna and John Colasanti
Teresa Colasanti
Tania Cugliari
Sabrina Da Costa
Marie DeBartolo
Rosemary Digeronimo
Luigina Facin
Anna Galluccio
Maria Gandolfo and Michael Galloro
Alma Gonzalez
Erin Graham
Nicole Griffo

Sonia Hartsell
Dr. Andrew Howarth
Alexander Ihnatowycz
Arno Ilic
Maryann Jefferies
Christa Kalverda
Deborah Kerrigan Brown
Kids Therapy Services – Nadia Noble
Michelle La Rochelle
Shona Lauzon
Patrick Longpre
Susan Lough
Janet MacPhee
Christina Martellacci
Mary Maw
Mathew McFarland
Heather McMeekin
Wayne and Janice McTaggart
Cesare Mirabelli
Lisa Molinelli
Cheryl Neely
Jozef Nyiri and Edit Muller
Niki Palic
Alan Palmer
Jigar Patel
Elizabeth Pathak

Sandra Perdeaux
Sheralyn Roman
Karen Savoia
Genevieve Simnett
Ann Smith in honor of Olive Gromacki
Brenda St. Croix
Janine Symanzik
Sunny Talbot
Rudita Velasco
Marylou Vultaggio
Susan Vint
Jermaine Watt
Stephanie White-Shortly
Rasha Williams
Anne Marie Winnington
Anne Zaidi in celebration of Zain Jawad

Special thanks to the following media organizations for their support.

The Caledon Enterprise
The Caledon Citizen
In the Hills
Snapd Caledon

Scotiabank, Bolton once again presented a cheque for \$5,000 to the Caledon Parent-Child Centre in 2016.

This generous gift represented Scotiabank Bolton's ticket matching contribution to CPCC's signature fundraising event, "Laugh Out Loud."

The proceeds from "Laugh Out Loud" will support programs at the CPCC that strengthen families, including those for families parenting children with special needs.



In the fall of 2016, the Rotary Clubs of Palgrave and Bolton made an historic and very generous gesture of banding together to provide an entire year of funding for the "Let's Get Together" (LGT) program.

LGT is a program which enables families who have children with special needs to find respite, connect, form friendships and support one another in a safe and nurturing environment.

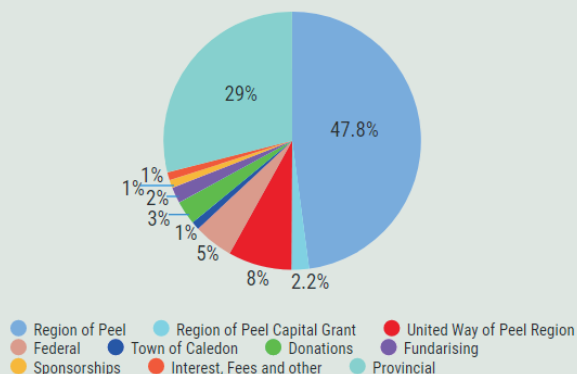
The CPCC would like to take this opportunity to offer our most sincere thanks to all the businesses and service groups who support our Centre year after year.

Financial Summary

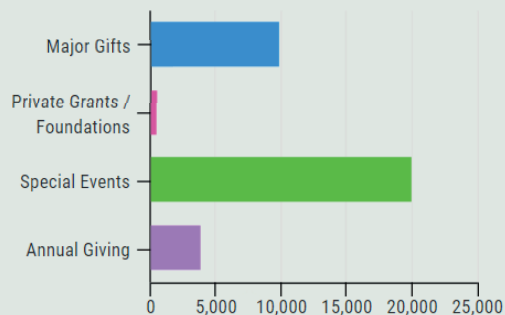
Statement of Operations

| | 2016/2017 | 2015/2016 |
|---|----------------|----------------|
| Revenue | | |
| Government Funding | 587,779 | 635,884 |
| Non Government Funding or Revenue from other Funding Sources | 58,653 | 57,947 |
| Donations/Sponsorship/Fundraising | 44,401 | 52,728 |
| Total | 690,833 | 746,559 |
| Expenses | | |
| Salaries | 498,790 | 545,381 |
| Occupancy Expenses | 107,957 | 107,465 |
| Other Operating Expenses | 65,940 | 74,199 |
| Fundraising Expenses | 10,033 | 9,583 |
| Total | 682,720 | 736,628 |
| Excess of Revenue over Expenses | 8,113 | 9,931 |

Sources of Revenue



2016-2017 Fund Development Revenue Dashboard



ERROR: undefinedresult
OFFENDING COMMAND: itransform

STACK:

3124.1
4159.1